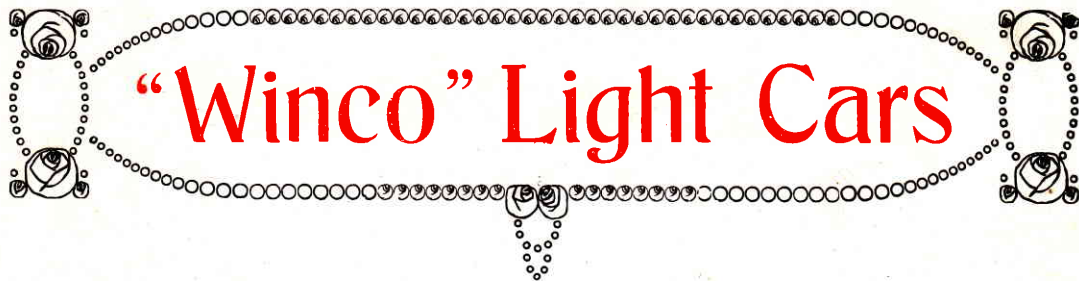


LIGHT



CARS.



“Winco” Light Cars

STRINGER & CO. (SHEFFIELD), LTD.,
WINCOBANK STEEL WORKS,
WINCOBANK,
SHEFFIELD.

Telegrams : “STRINGER, WINCOBANK.”

Phone 22 ATTERCLIFFE.



WE have pleasure in introducing to you our "Winco" Two Seater Light Car. This Car has been evolved after very strenuous tests undertaken in the hilliest parts of Yorkshire and Derbyshire, lasting over 16 months ; and our aim has been to design a Car which would combine reliability, simplicity of control, flexibility and hill climbing power, and we think we may state in all confidence that we have achieved this.

This Car meets a great need of the present day owing to its economy, comfort and smart appearance. The whole of the workmanship and material in the Chassis are of the finest quality, and all the parts which have to take great strains are made from special Nickel Chrome Steel.

Special attention has been paid to the Springs, which are extremely strong and very flexible, being made from a special Chrome Steel.

We have specialised in Steels for Motor Car construction for the last 10 years, and have been able, in consequence, to utilise our experience in this direction to ensure the use of the right materials in the proper place.

The Tyres are larger than is actually necessary ; this, of course, slightly increases the cost of the Car, but we are assured that the infinitely greater comfort in riding and the longer life of the Tyres is a great advantage to the user.

THE CAR IS BRITISH BUILT OF BRITISH MATERIALS THROUGHOUT.

TERMS. One-third of purchase price with order, balance on advice that the Car is ready for delivery at our Works. All prices quoted F.O.R. our Works.

GUARANTEE. Our Cars are guaranteed to the original purchaser for 12 months from date of delivery against any breakage of parts due to faulty material or workmanship. This guarantee is limited to the supply of new parts or to the repair of broken parts sent to us carriage paid. We undertake no responsibility for Tyres, Accessories or Parts not manufactured by us, and we accept no contingent liability whatever.

Specification.

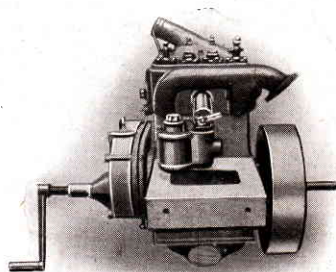
Wheel Base, 9 ft. 6 in. Wheel Track, 4 ft. Overall Length, 12 ft. 3 in. Overall Width, 5 ft.
Width Inside Seat, 3 ft. 7 in. Weight with Windscreen, Hood, Lamps, and filled up ready for the road, 8½ cwts.

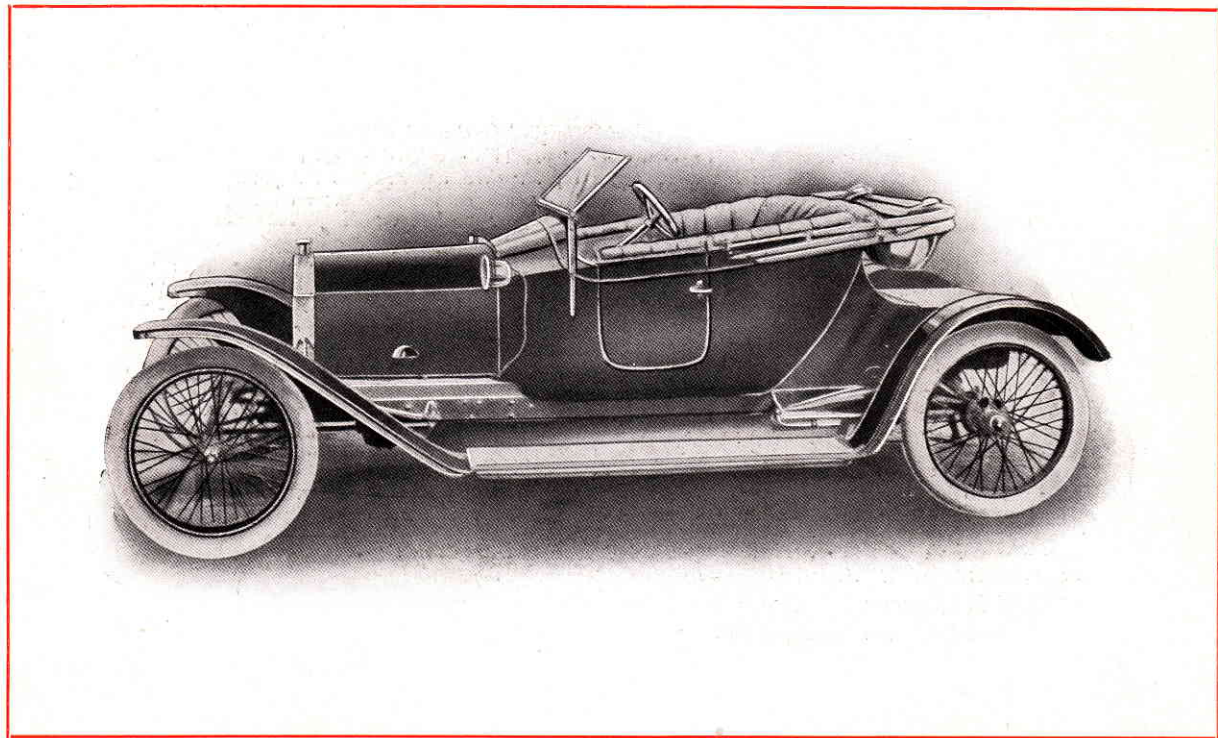
ENGINE. "WINCO" Vertical Twin Cylinder, water cooled. Bore, 3⅜ in.; Stroke, 3⅝ in.; 9.2 R.A.C. rating. BALANCED CRANKSHAFT, running in phosphor bronze bearings, with enclosed chain drive to Camshaft. The Crankshaft is machined from solid forging of 45 tons SPECIAL CRANK STEEL. Oil tempered and ground all over.

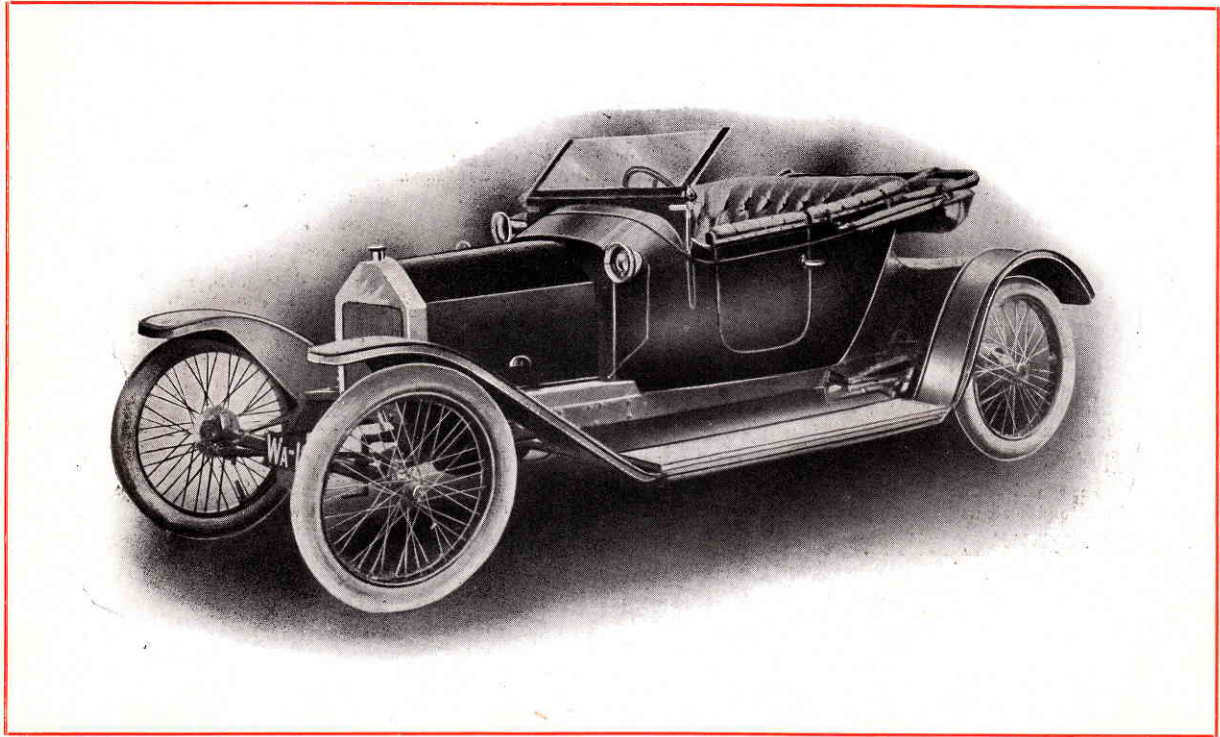
IGNITION. HIGH TENSION MAGNETO, with enclosed chain drive from Crankshaft, with special adjustable coupling.

CARBURETTOR. Automatic; is extremely efficient under all conditions. Gives 45 miles per gallon.

COOLING. THERMO-SYPHON through vertical tube Radiator of ample proportions. This Radiator has sufficient cooling surface to ensure that the Engine will not overheat, even under the worst conditions







LUBRICATION. ENTIRELY AUTOMATIC, with force pump driven from camshaft. There are no pipes or unions on this system, and it has been designed with a view to obviating as many joints as possible, and the result is ABSOLUTE CLEANLINESS AND EFFICIENCY.

CLUTCH. Leather lined cone of ample proportions, giving satisfactory wear under all conditions. The Clutch Leather has a large surface and is exceptionally smooth in its action.

CONTROL. Foot Accelerator.

FRAME. Perfectly straight Frame of very deep section, and is constructed with a member of well seasoned ash enclosed between Two Flitch Plates of Spring Steel; the whole rivetted together, and is of exceptionally strong construction.

CHANGE SPEED GEAR. Three speeds and reverse sliding gear with rocking gate change, The Gears are all made from our own special material and case hardened. The steel used in these Gears is the result of 10 years' experience in the manufacture of steels for motor car use. The Gear Box is bolted direct on to the Rear Axle Case and is connected to the Frame by an extension torque tube, which ensures rigidity under all conditions.

REAR AXLE. BALL JOURNAL BEARINGS THROUGHOUT. The remarks on the Gear Wheels in Gear Box apply to the bevel gears and differential pinions. The main driving shafts are of Chrome Nickel Steel, and has been specially perfected after long years of experience for this particular class of work.

FRONT AXLE. Is constructed from cold drawn Steel Tubing, and the swivels at the ends are Stampings made from High Tensile Steel. The front wheels run on standard BALL JOURNAL BEARINGS, and are protected from wear by means of special designed dust-proof hubs.

STEERING GEAR. IRREVERSIBLE TYPE, with worm and nut. All working parts are made from special steel and case hardened to ensure long life and durability.

ROAD WHEELS. These are very strongly constructed with tangent Wire Spokes and heavy Rims.
TYRES. 750×85 "CLINCHER" CAR TYRES.

SPRINGS. SEMI-ELLIPTIC. The springing has been designed with a view to extreme comfort. Both front and rear axles slide on the ends of the Springs, the opposite end sliding in a housing and the centre pivotly supported on the Frame, and both front and rear Axle provided with radius rods to ensure correct alignment. The result is absolute comfort on the most uneven road surface.

BRAKES. Hand Brake Internal inside drum on Rear Wheel. Foot Brake Internal inside drum on Rear Wheel, both acting independently. All Brakes are provided with accessible finger adjustments, these being arranged on the actuating lever close to the Road Wheels, and are very easily manipulated. All Brakes may be adjusted by simply screwing up a thumb nut. All Brake Shoes are lined with special fabric which is unaffected by oil or water, and ensures smoothness of action.

BODY. TWO-SEATER TORPEDO COACH BUILT, spring upholstered. This Body is exceptionally well made, and special provisions have been made to ensure absolute comfort. It is provided with a large boot and luggage platform at the back.

FINISH. COACH FINISH THROUGHOUT. STANDARD COLOR : Dark Red, lined Black, with Red Upholstering. Any desired colour as required.

TOOL KIT.

Foot Tyre Pump.
Two Double Ended Spanners.
Two Box Spanners.
One Shifting Spanner.

Magneto Spanner.
Hammer.
Screwdriver.
Chisel.

Two Tyre Levers.
One Pair Pliers.
Petrol Funnel.
Four Spare Jets for Carburettor
Two Spare Choke Tubes.

PRICE.

£150 Two Seater, complete with Body, Tyres and Tool Kit.

£165 With Hood, Wind Screen, Head Lamps, Separate Generator, 2 Side Lamps, Tail Lamp and Horn.

£137 Chassis, complete with Tyres.

EXTRAS.

	£	s.	d.
Hood, complete with Side Curtains and Brass Fittings, with large Mica Window in back, fitted	6	6	0
Adjustable angle, Mahogany Frame, Glass Windscreen, with Brass Fittings	4	4	0
Stepney Wheel, complete, fitted	2	12	6
750 × 85 Plain Tread "Clincher" Cover	2	5	10
750 × 85 "Clincher" Grooved Cover	3	0	10
750 × 85 "Clincher" Steel Studded Non-Skid	3	13	2
750 × 85 Inner Tube	0	17	6
Two 6 in. "Rushmore" Head Lights, complete with Brackets, independent "Rushmore" Generator, with necessary Rubber Tube and Fittings, fitted to car	10	15	0
1 complete set special Head Lamps, with independent Generator and Rubber Tube and all Connections fitted to car, complete with Head Lamp Brackets	9	0	0
(Any other make of Head Lamps fitted to order).			
A pair of Brass Side Lamps and 1 Tail Lamp	2	0	0
Long Flex deep note Horn	1	0	0
"Stewart" Speedometer, Model 84, reading to 60 miles per hour, with 10,000 miles recurring trip fitted to car	4	0	0
Disappearing Dickey Seat	5	0	0

(Any special accessories can be obtained and fitted to suit customer's requirements at maker's list price).

We reserve the right to make any slight alteration in the above specification from time to time without previous notice.

